



GIFTED BY NATURE



CRAFTED BY MAN

NOW ALSO AVAILABLE IN HARDWOOD

NATURE PRO

Gifted by nature. Crafted by man.



CENTURY VENEERS[®]

natzurawoods

Gifted by nature. Crafted by man.

CONTENT

Key Features 2-3

Metallic 4-15

Bronze SV Oak Hz	6
Silvern ES Figured	6
Silvern EL Burl	7
Coire EM Burl	7
Silvern DW Crotch Hz	8
Silvern GC Pommelle	8
Coire DW Crotch	9
Bronze GC Pommelle	9
Silvern EM Burl	10
Silvern RV Oak	10
Coire AK Burl	11
Coire NL Figured	11
Bronze NT Crotch	12
Coire SP Pommelle	12
Silvern GC Figured Hz	13
Silvern AK Cluster	13
Silvern GY Crotch Hz	14
Silvern AN Maple	14
Bronze KT Pine	15
Silvern AK Burl	15

Mystique 16-25

Tanzania Wood	18
Dark Diva	18
Mellon Dew	19
Oak Dew	19
Choco Lure	20
Mirage	20
Afro Bark	20
Bark Burn	21
Choco Flame Crown	21
Coffee Bean	21
Malaysian Rain Wood Hz	22
Dark Bean	22
Satinox	22
Deep Grain	22
Texas Wilderness	22
Black Diamond Oak	22
Dark Brown Amazonia Hz	23
Oak Granito	23
Molten Chocolate	23
Dusk Dew	23
Desert Storm	23

Hazelwood	23
Tropical Stallion	24
Rivera Wood	24
Silky Sheen	24
Castanea Rays	24
Inferno	24
Somalian Timber	24
Malawi Wood	25
Masaimara Wood	25
Tropical Golden Wood	25
Oak Albura	25
Kaziranga Wood Hz	25
Rodenza	25

Dark 26-33

American Walnut	28
Sapeli	28
Wenge	29
Sapeli Crown	29
American Walnut Quarter	30
Makore	30
Sucupira	30
Rosewood	31
Dark Walnut	31
Gabon Wood	31
Louro Preto	32
Golden Wenge	32
Mountain Santos	32
Louro	32
Sapeli Pommelle	32
Ipe	32
Ebony	33
Bubinga Pommelle	33
Wenge Crown	33
Red Ebony	33
Santos	33
Bibolo	33

Medium 34-41

White Oak	36
Red Oak	36
Afrosia	37
White Oak Quarter	37
Red Oak Quarter	37
Mahogany	38
Bubinga	38
Red Cedar	38
Golden Cedar Crown	39
Golden Wood	39
Silver Oak	39
Paldao	40
Jatoba	40
American Cherry	40
Golden Cedar	40
Khaya	40
Aromatic Cedar	40
Zebrano	41
Ovangkol	41
Etimoe	41
American Red Elm	41
Guiabao	41
Tineo	41

Light 42-47

White Ash	44
Chen Chen	44
Anegre	45
Knotty Pine	45
Eucalyptus	45
Figured Eucalyptus	46
Koto	46
Sycamore	46
American Maple	46
Larch	46
Tulip	46
Steamed Beech	47
Chestnut	47
Figured Sycamore	47
White Beech	47
Dibeto	47
White Ash Quarter	47

Horizontal 48-51

Brazilian Santos Horizontal	50
Gabon Wood Horizontal	50
American Walnut Horizontal	51
Choco Lure Horizontal	51

Era 52-57

Hatched Flakes	54
Roasted Almond	54
Antique Crown	54
Spiced Ginger	55
Bourbon Dark Forest	55
La Paz Metallic Wood	55
Lumiere Night	56
Dark Cinnamon	56
Vintage Canvas	56
Midnight Forest	57
Pearl Wood	57
Borneo Rain Wood	57

Shimmer 58-61

Gold Shimmer	60
Silver Shimmer	60
Copper Shimmer	60
Ivory Shimmer	61
Sunlight Shimmer	61
Violet Shimmer	61

Glow 62-65

Oak Granito Glow	64
Castanea Rays Glow	64
American Walnut Glow	65
Barkburn Glow	65
Coco Flame Glow	65

Canvas 66-69

Brown Canvas	68
Green Canvas	68
Grey Canvas	69
Violet Bling Canvas	69

Elite 70-75

African Ebony	72
Royal Ebony Crème	73
Imperial Ziricote	74
Real Vintage Oak	75

Dyed 76-79

Dyed Koto White	78
Dyed Koto Marble White	78
Dyed White Ash White	78
Dyed Koto Light Grey	79
Dyed Koto Black Silk	79
Dyed White Ash Black	79

A La Carte 80-99

Checkered Illusion	82-83
Checkered Illusion Mix White Oak	83
Checkered Illusion-American Walnut	83
Burl Block	84-85
Mapa Burl Block	85
Oak Burl Block	85
Walnut Burl Block	85
Diagonal	86-89
American Walnut Diagonal Line	87
Knotty Pine Diagonal Line	88
Barkburn Diagonal Line	88
Texas Wilderness Diagonal Line	88
Dark Cinnamon Diagonal Bricks	89
Barkburn Diagonal Bricks	89
Brown Santos Diagonal Bricks	89
Evolution	90-93
Wegen	91
Charl Border	92
Smoked Mok	92
American Lawnut	92
Apelis	93
Pie	93
Capyulates	93
Revoluzion	94-95
Revoluzion Mellon Dew Horizontal	95
Revoluzion American Walnut Horizontal	95
Revoluzion Barkburn Horizontal	95
Butt Cut	96-97
American Walnut Butt Cut	97
Trendz	98-99
Fan Chocolure	99
Cross Wood	99
Choco Umbrella	99

Arizona 100-105

Arizona Oleo	101
Arizona Light Brown	101
Arizona Coffee	101
Arizona Coco	102
Arizona Castanea Rays	102
Arizona Chestnut	102
Arizona Red Oak	103
Arizona White Oak	103
Arizona White Ash	103

Crotch 104-105

Mahogany Crotch	105
Teak Crotch	105
Gabon Wood Crotch	105

Cutting Methods 106

Grouping Veneers 107

Veneer Matching Options 108

Care & Maintenance 109





GIFTED BY NATURE.

Enthused from the diversity in nature, this range showcases an exquisite assortment of natural veneers that have been crafted to perfection by our specialists to give an uber-chic touch to your interiors.

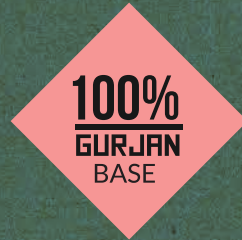
CenturyVeneers takes immense pleasure in bringing to you NatzuraWoods - our ravishingly new and excellent range of veneers. These exotic species are sourced from sustainable forests of Africa, South East Asia, Europe and the Americas.

CRAFTED BY MAN.





**BORER & TERMITE
RESISTANT**



**100%
GURJAN
BASE**



MITT
MELAMINE
IMPREGNATED
TISSUE TECHNOLOGY



**GLUE LINE
PROTECTION**



**HOT-MELT
THREAD SPLICING**



**GERMAN SANDING
TECHNOLOGY**



**BOILING WATER
RESISTANT**



**CERTIFIED
BY INDIAN GREEN
BUILDING COUNCIL**



VIROKILL

Kills more than 99% Viruses

CenturyVeneers now comes with Virokill that has highly activated and energized nanoparticles which physically ruptures and kills microbes, thereby keeping the surface safe and hygienic.



Anti-Viral



Anti-Microbial



Anti-Bacterial



Anti-Fungal

More than 99% protection ensuring a Hygienic & Safe Environment*



Non-Toxic

Anti microbial performance in our veneer lasts longer



Thermo-Stable

Stays steady at higher temperature



Long-Lasting

Non toxic & absolutely safe



Effective

Works against a broad range of microbes

*Standard terms & conditions applicable.

METALLIC

CenturyVeneers hereby presents its latest range of treated natural veneers, the Metallic Range. This range boasts of exclusive base species containing unique figures which are further highlighted by a special treatment which makes the designs get a metallic sheen in myriad of tones.



Bronze KT Pine



Bronze SV Oak Hz



Silvern ES Figured



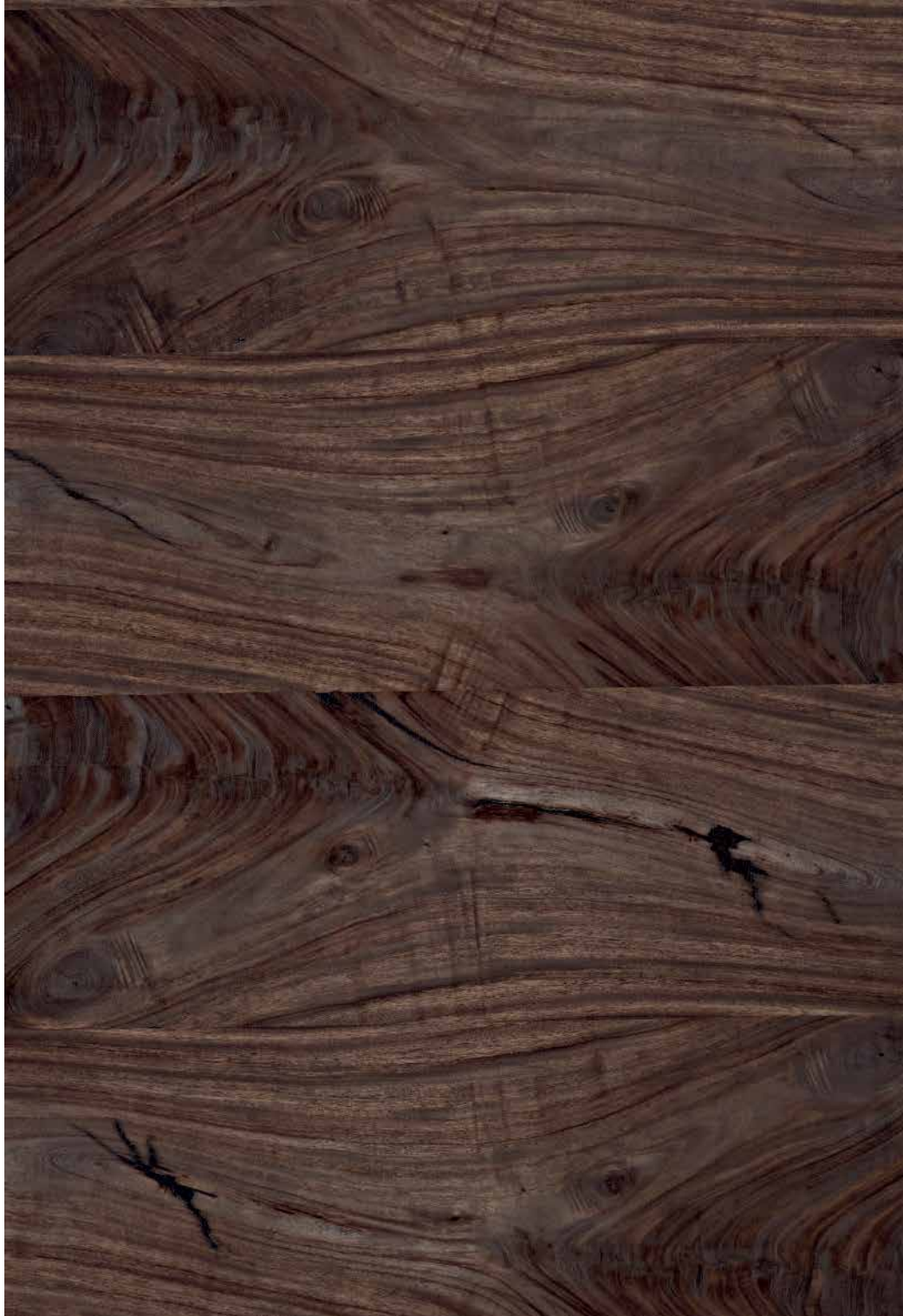
Silvern EL Burl



Coire EM Burl



Silvern DW Crotch Hz



Silvern GC Pommelle



Coire DW Crotch



Bronze GC Pommelle



Silvern EM Burl



Silvern RV Oak



Coire AK Burl



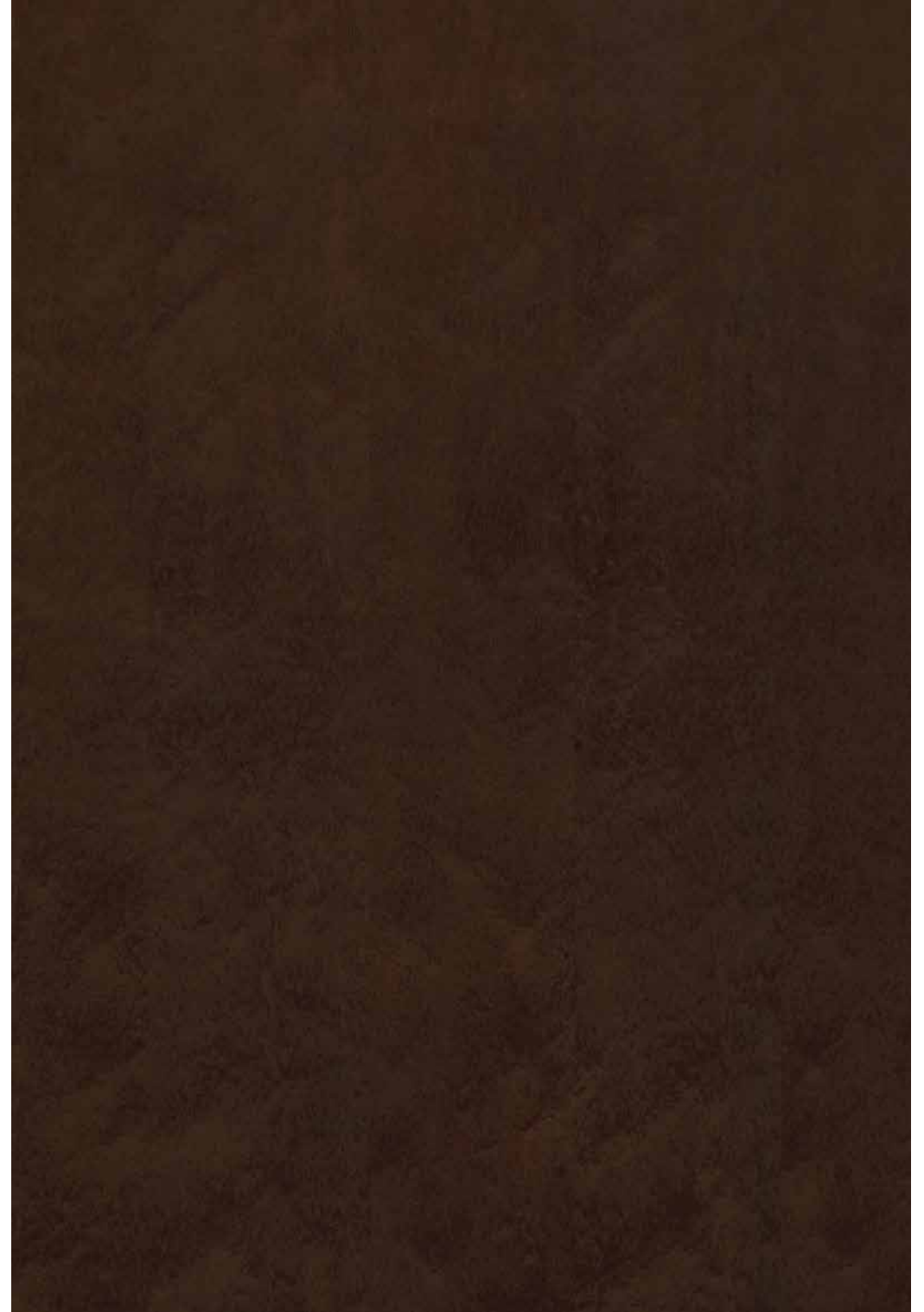
Coire NL Figured



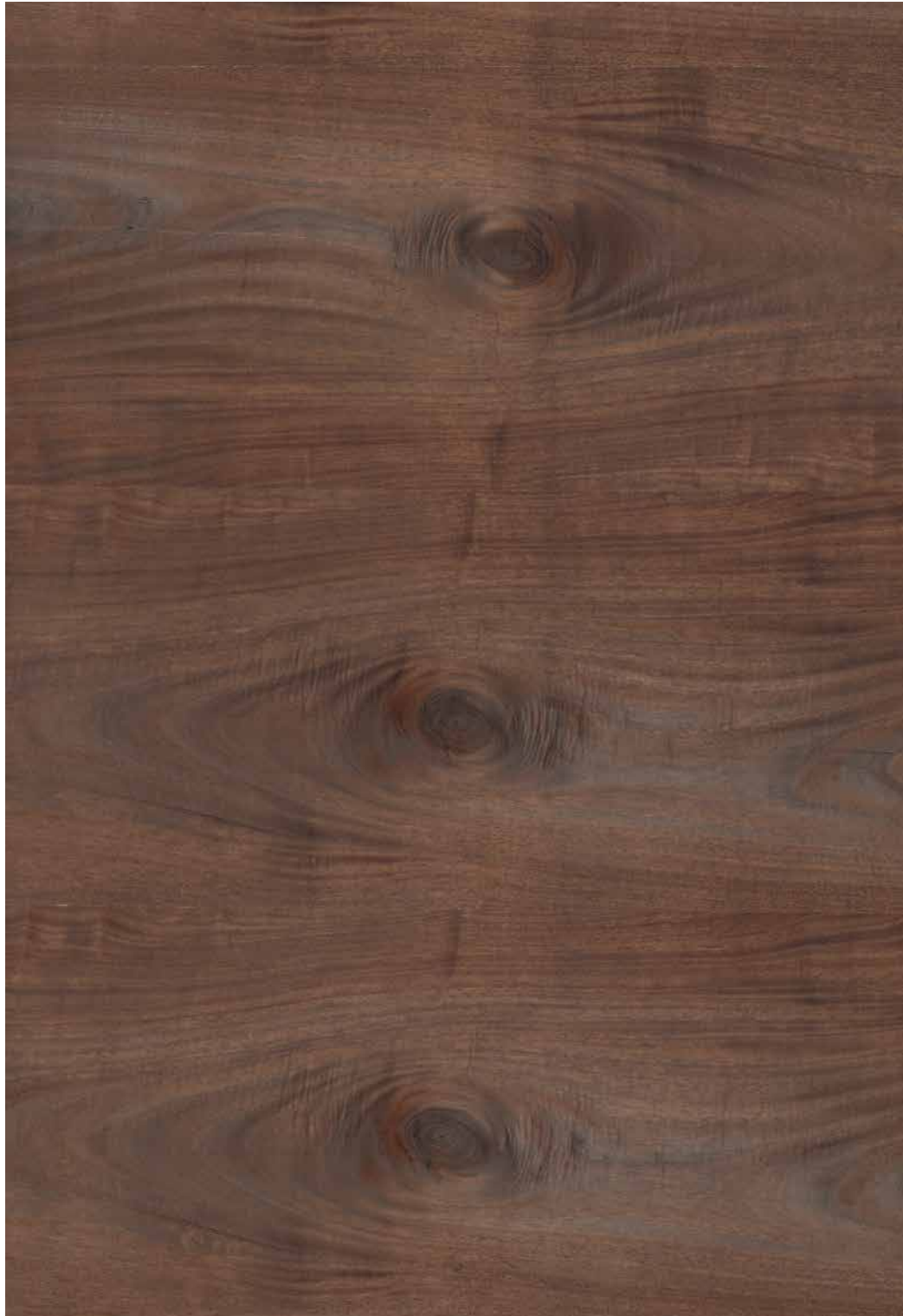
Bronze NT Crotch



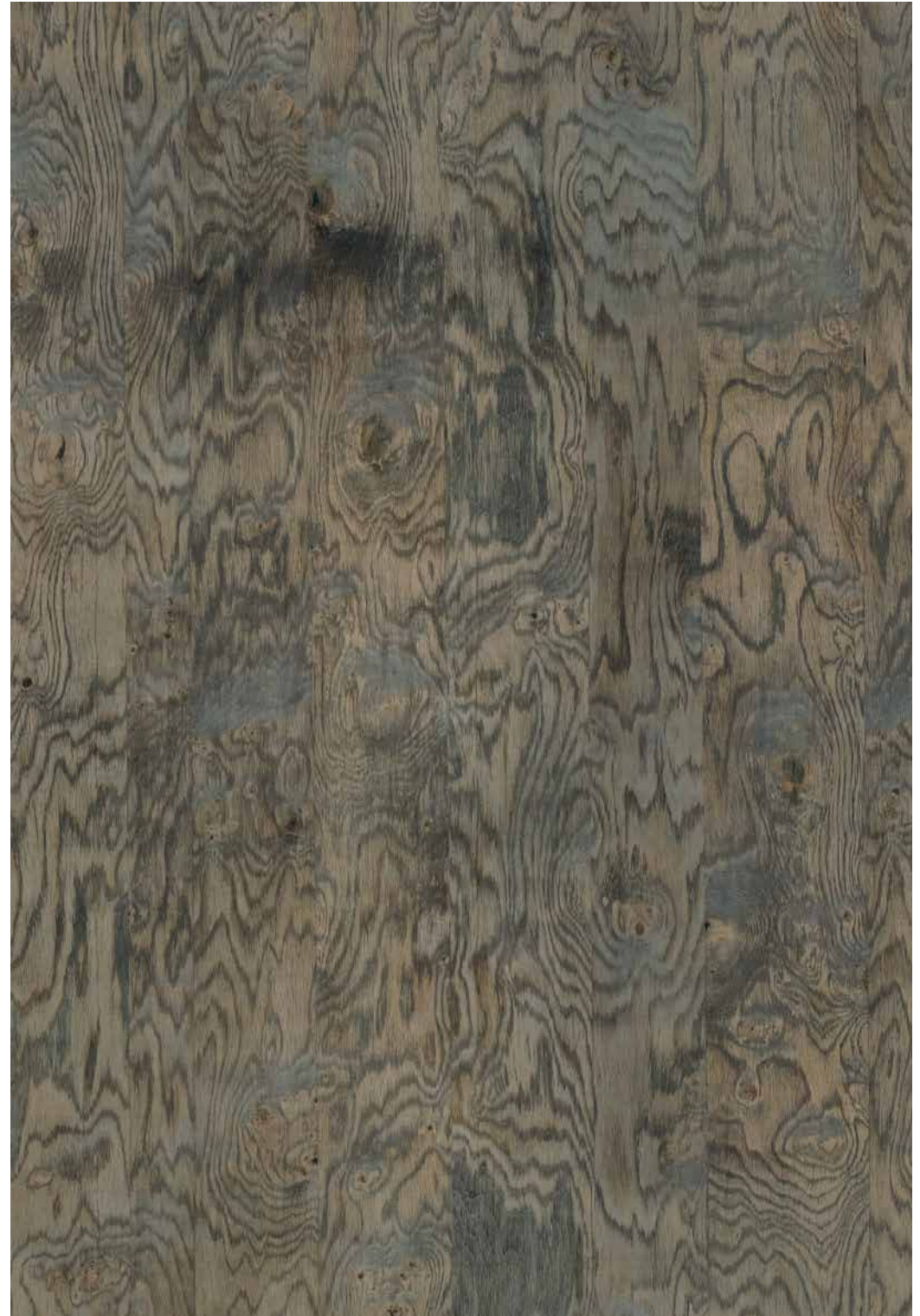
Coire SP Pommelle



Silvern GC Figured Hz



Silvern AK Cluster



Silvern GY Crotch Hz



Silvern AN Maple



Bronze KT Pine



Silvern AK Burl



MYSTIQUE

Nature is full of extraordinary facets like dense forests full of extraordinary flora and fauna that delight us. Inspiration for our range of smoked Veneers, which add warmth to any living space.



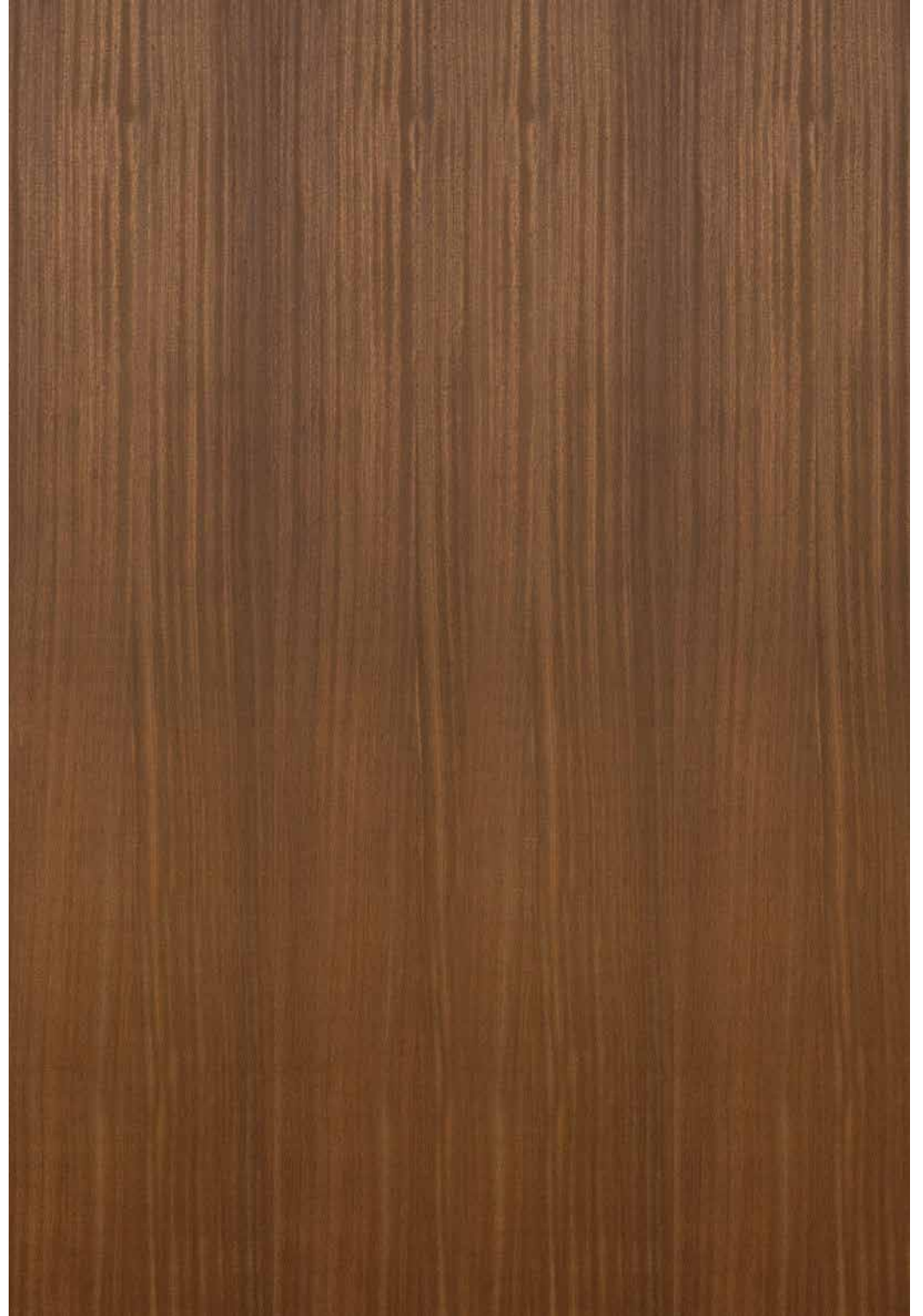


Tanzania Wood

Tanzania Wood



Dark Diva



Mellon Dew



Oak Dew



Choco Lure



Mirage



Afro Bark



Bark Burn



Choco Flame Crown



Coffee Bean



Malaysian Rain Wood Hz



Dark Bean



Satinox



Deep Grain



Texas Wilderness



Black Diamond Oak



Dark Brown Amazonia Hz



Oak Granito



Molten Chocolate



Dusk Dew



Desert Storm



Hazelwood



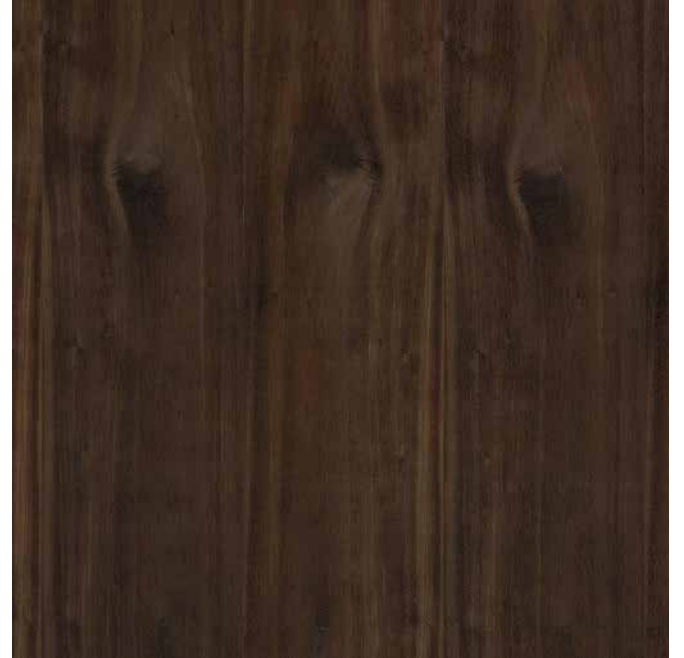
Tropical Stallion



Rivera Wood



Silky Sheen



Castanea Rays



Inferno



Somalian Timber



Malawi Wood



Masaimara Wood



Tropical Golden Wood



Oak Albura



Kaziranga Wood Hz



Rodenza



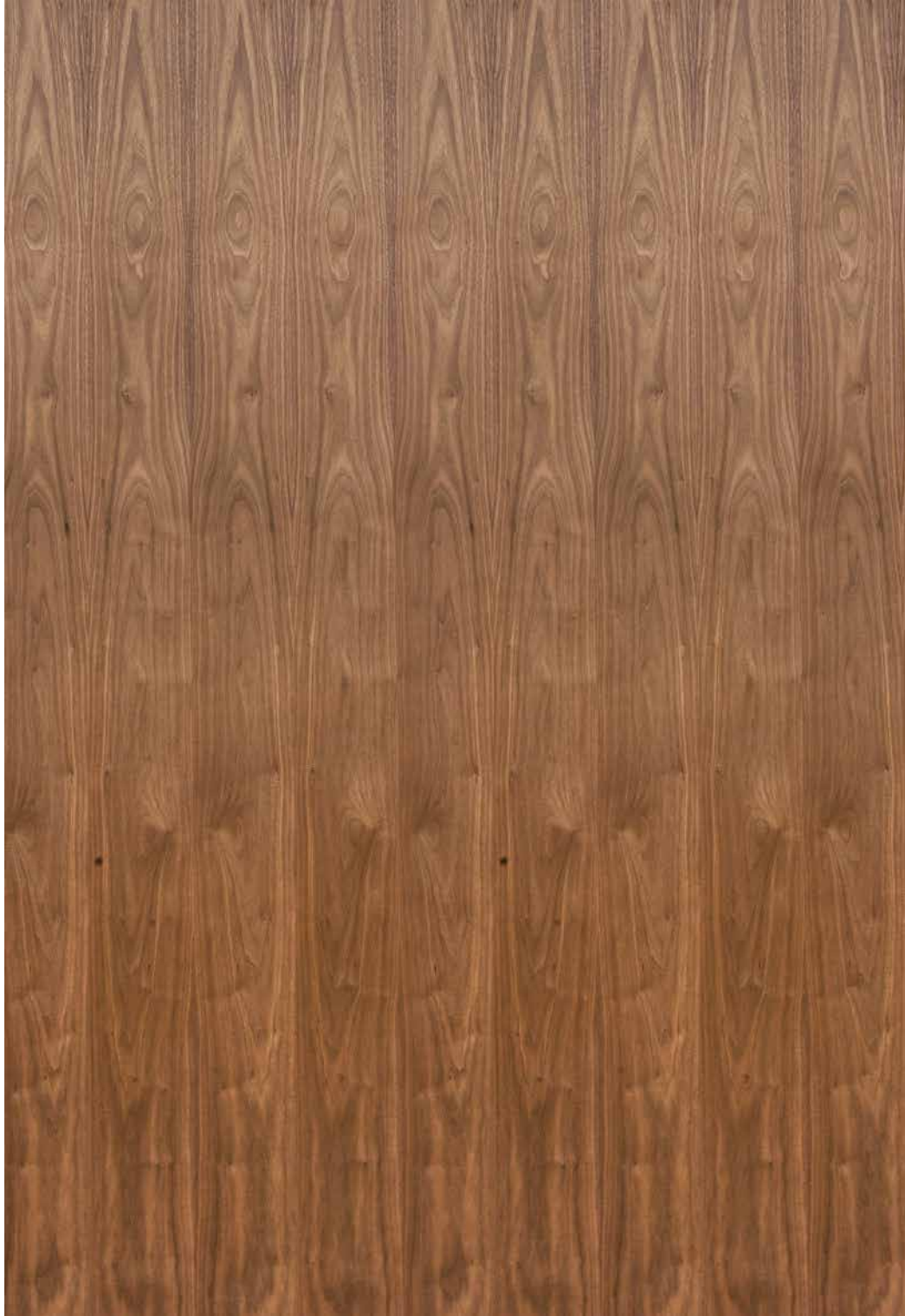
DARK

Like the tantalising dark beauty of the black stallion that gives a 'look at me again' feel, our range of Dark Veneers does the same to any interior making large rooms cozy, inviting and unforgettable.





American Walnut



Sapeli



Wenge



Sapeli Crown



American Walnut Quarter



Makore



Sucupira



Rosewood



Dark Walnut



Gabon Wood



Louro Preto



Golden Wenge



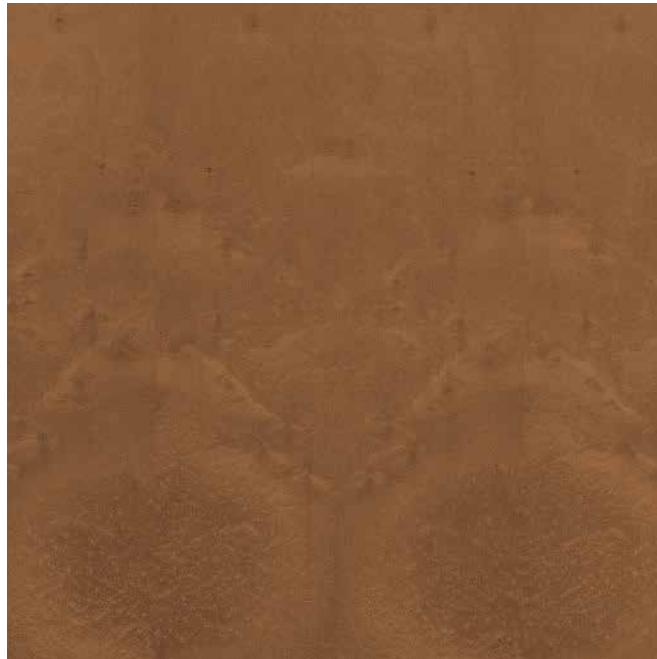
Mountain Santos



Louro



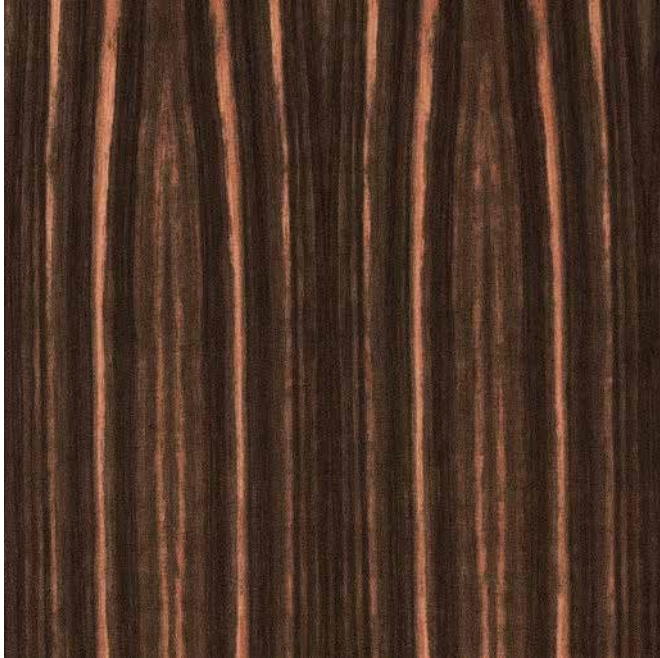
Sapeli Pommelle



Ipe



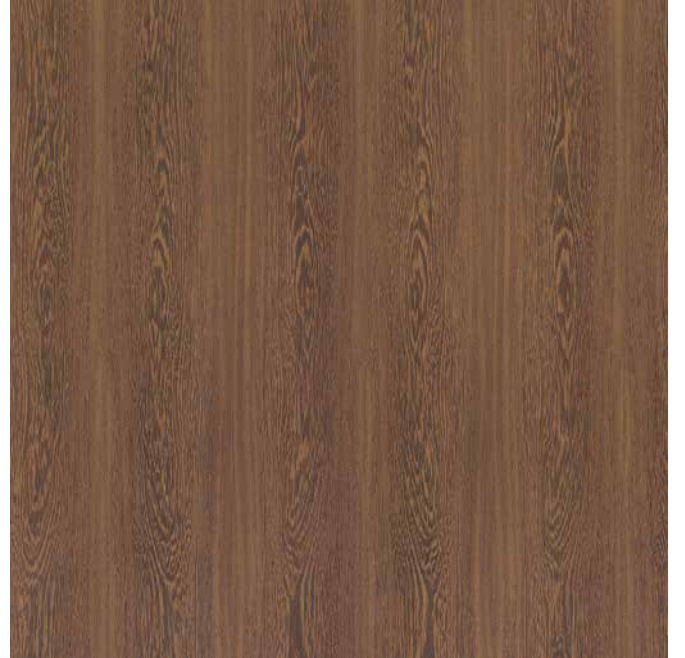
Ebony



Bubinga Pommelle



Wenge Crown



Red Ebony



Santos



Bibolo



MEDIUM

Much as the warm rays of the early morning sun that livens up the mushrooms in the countryside, Medium Veneers add warmth to your interiors making them ideal for rooms with a fair amount of incandescent light.



Paldo



Ovangkol



White Oak



Red Oak



Afromosia



White Oak Quarter



Red Oak Quarter



Mahogany



Bubinga



Red Cedar



Golden Cedar Crown



Golden Wood



Silver Oak



Paldao



Jatoba



American Cherry



Golden Cedar



Khaya



Aromatic Cedar



Zebrano



Ovangkol



Etimoe



American Red Elm



Guiabao



Tineo



LIGHT

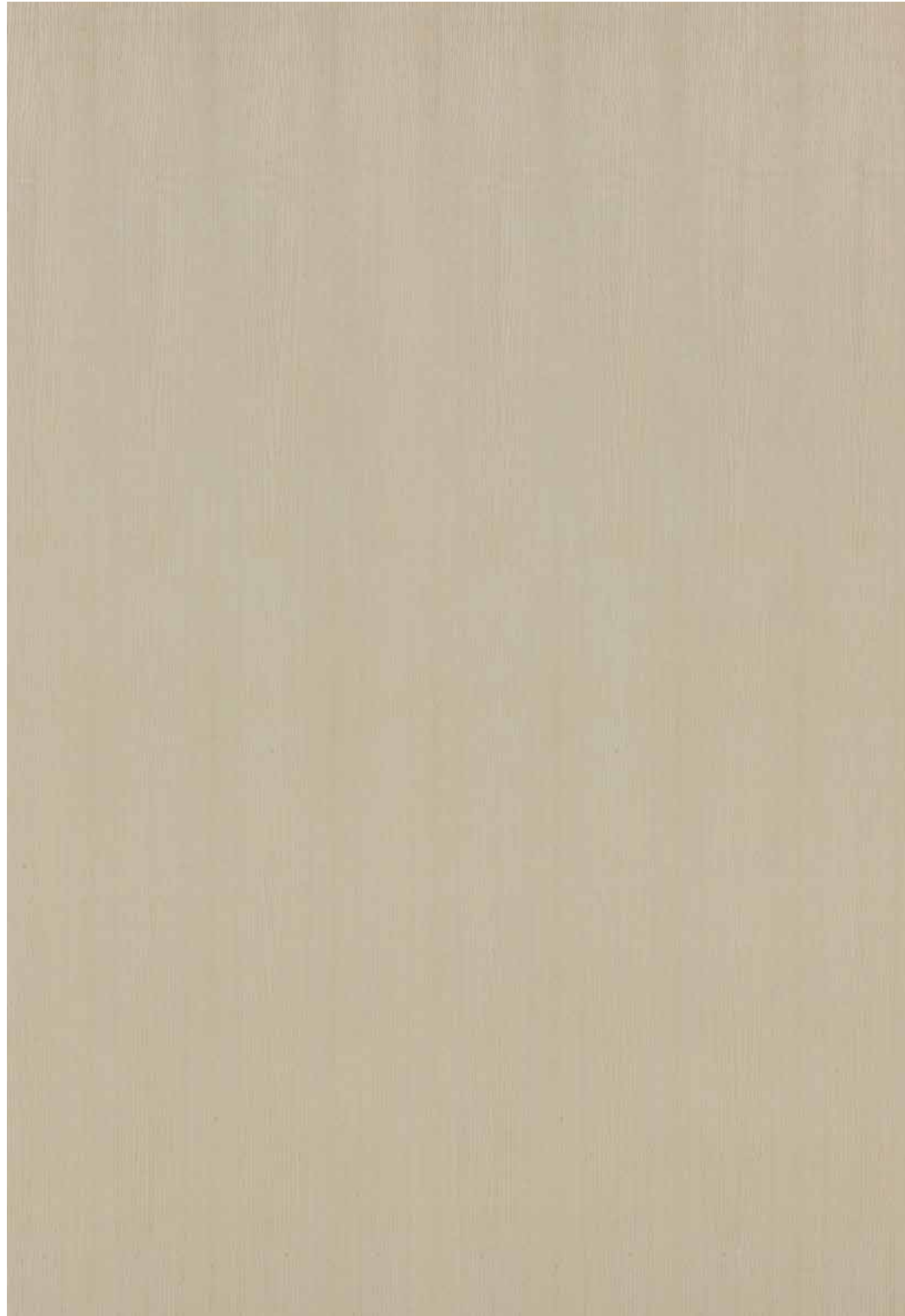
The ethereal exquisiteness of the dandelion encapsulates the beauty of life, easing our mind and soul. Much the same as Light Veneers bestowed with soft tones that lighten up any interior and make constricted spaces look spacious.





Knotty Pine

White Ash



Chen Chen



Anegre



Knotty Pine



Eucalyptus



Figured Eucalyptus



Koto



Sycamore



American Maple



Larch



Tulip



Steamed Beech



Chestnut



Figured Sycamore



White Beech



Dibeto



White Ash Quarter



HORIZONTAL

Horizontal Veneers are created by veneer flitches that result in graceful striations of a free-flowing linear pattern. Similar to the ripples created in water, these veneers add a sense of infinity to the interiors.



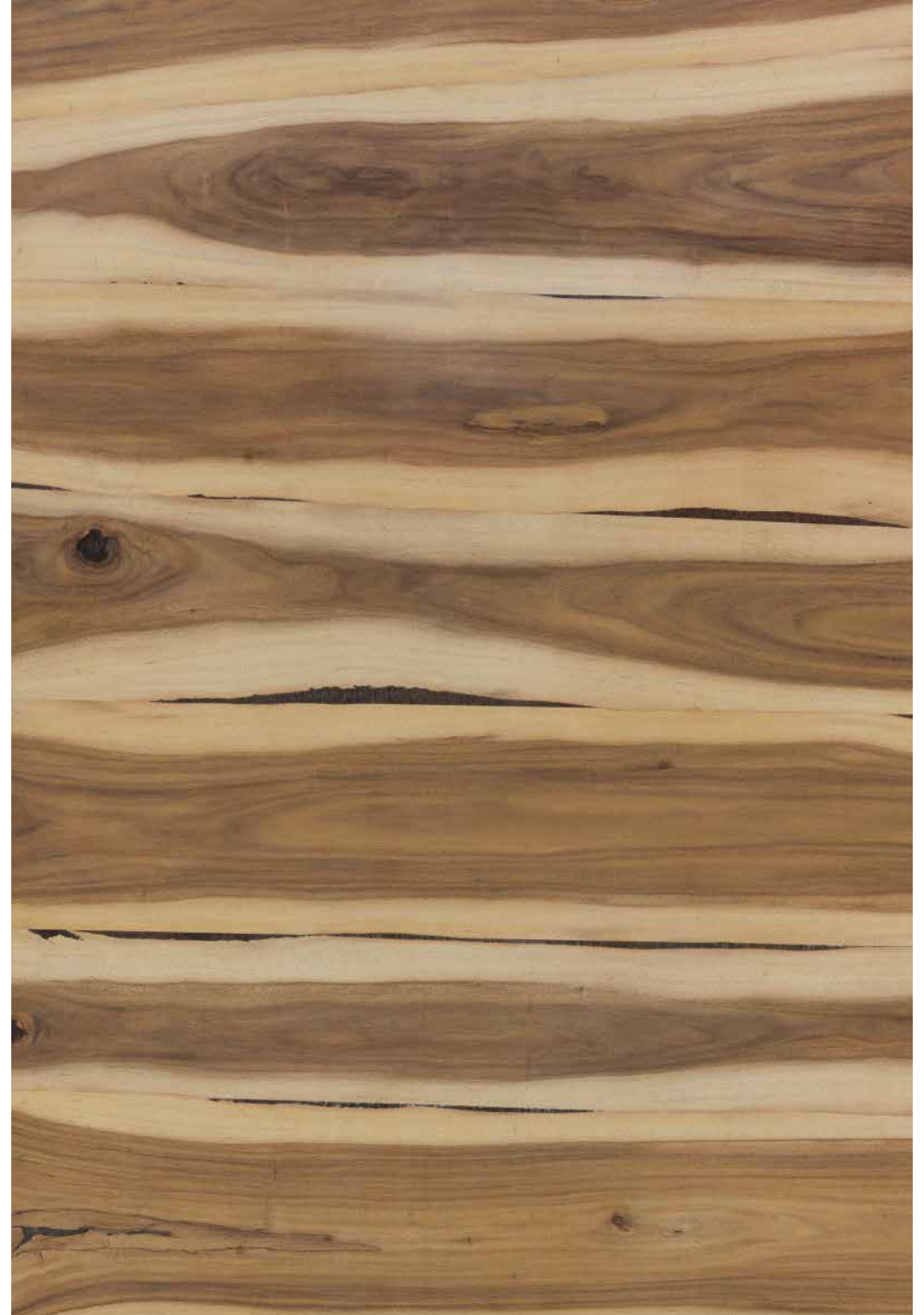


Brazilian Santos Horizontal

Brazilian Santos Horizontal



Gabon Wood Horizontal



American Walnut Horizontal



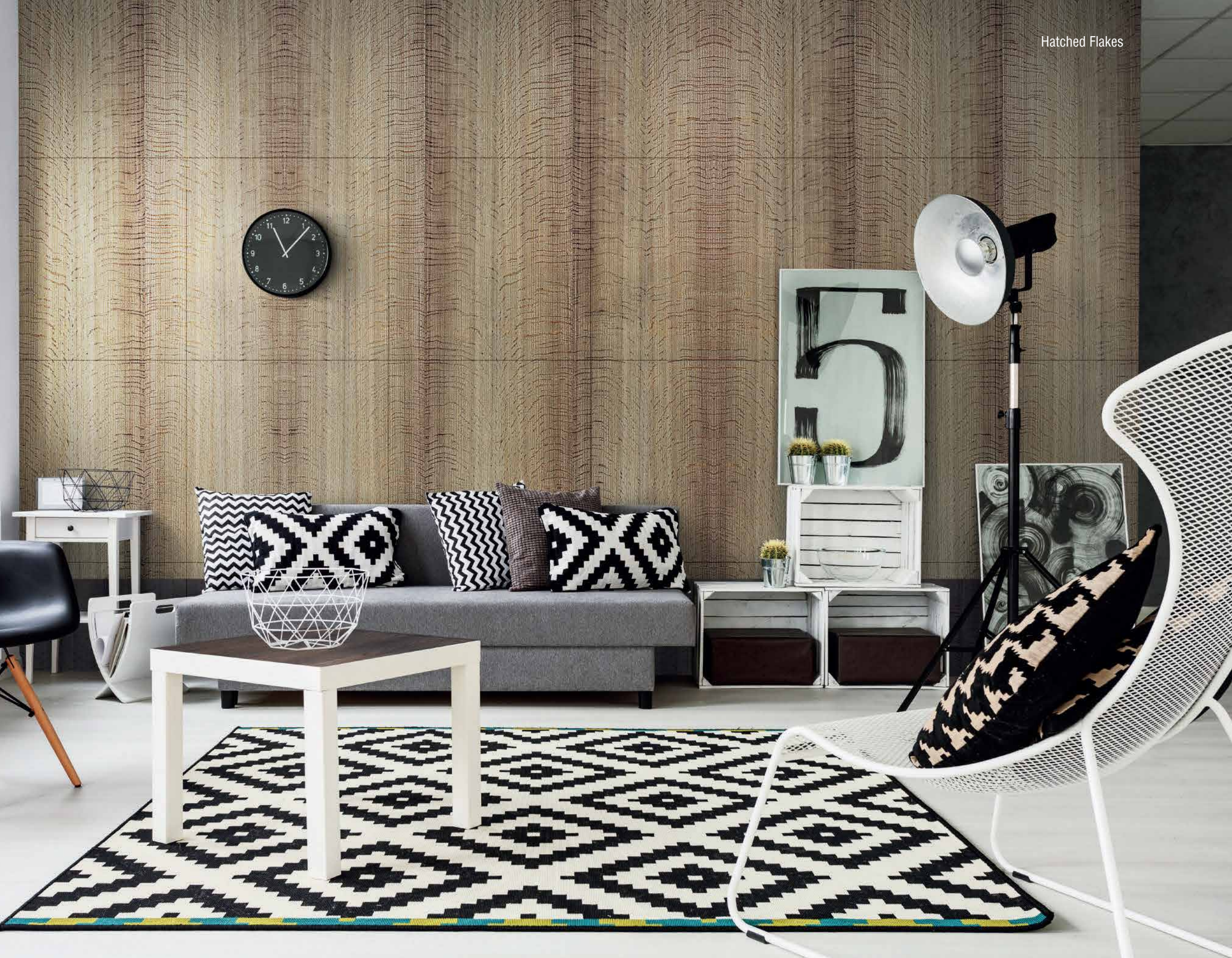
Choco Lure Horizontal



ERA

Drawing inspiration from hillocks that are centuries old, Era is our 'aged by design' range developed using state of art technology, by which every sheet glorifies nature's unfading beauty. This exclusive collection of veneers will give a vintage feel to the finest contemporary interiors.





Hatched Flakes



Roasted Almond



Antique Crown



Spiced Ginger



Bourbon Dark Forest



La Paz Mettalic Wood



Lumiere Night



Dark Cinnamon



Vintage Canvas



Midnight Forest



Pearl Wood



Borneo Rain Wood



SHIMMER

Like the sparkle of moonlight on water which leaves a spellbinding charm, these are the most fashionable range of natural veneers which let your interiors 'Shimmer' with pride.



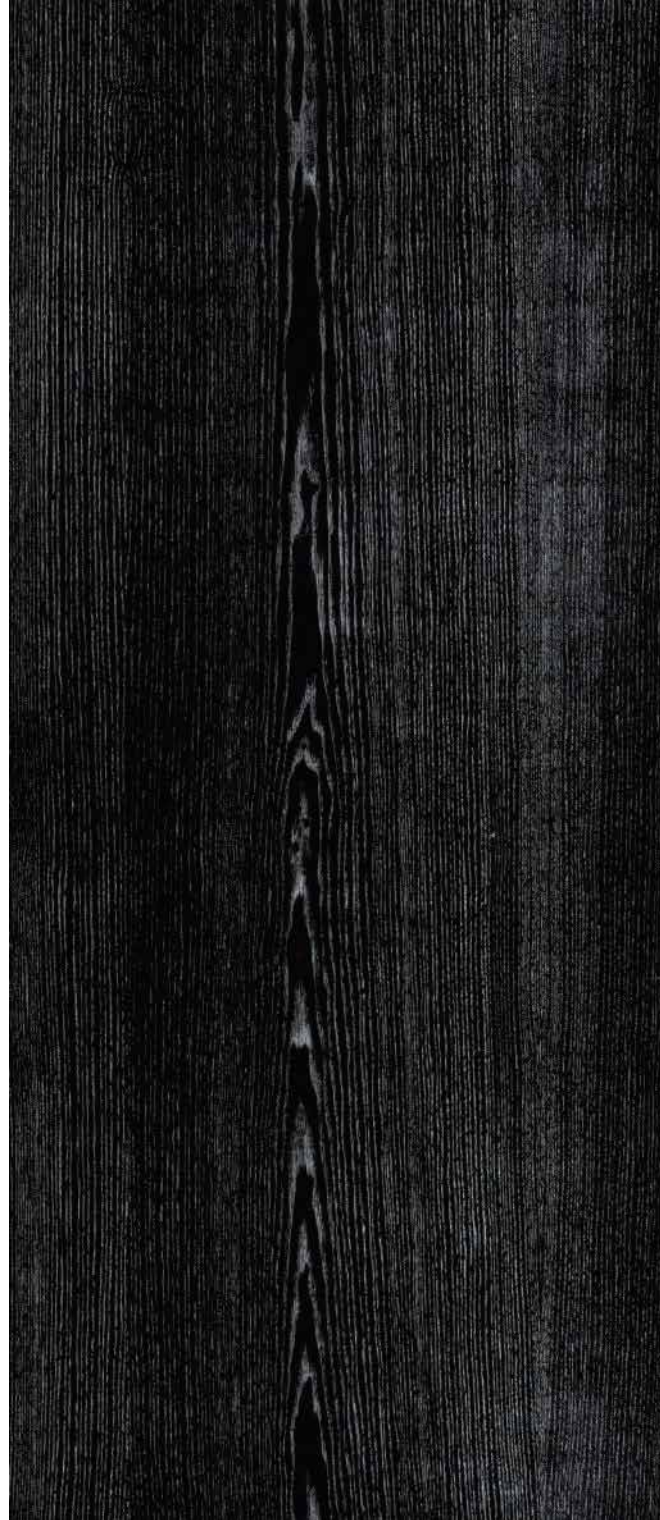


Silver Shimmer

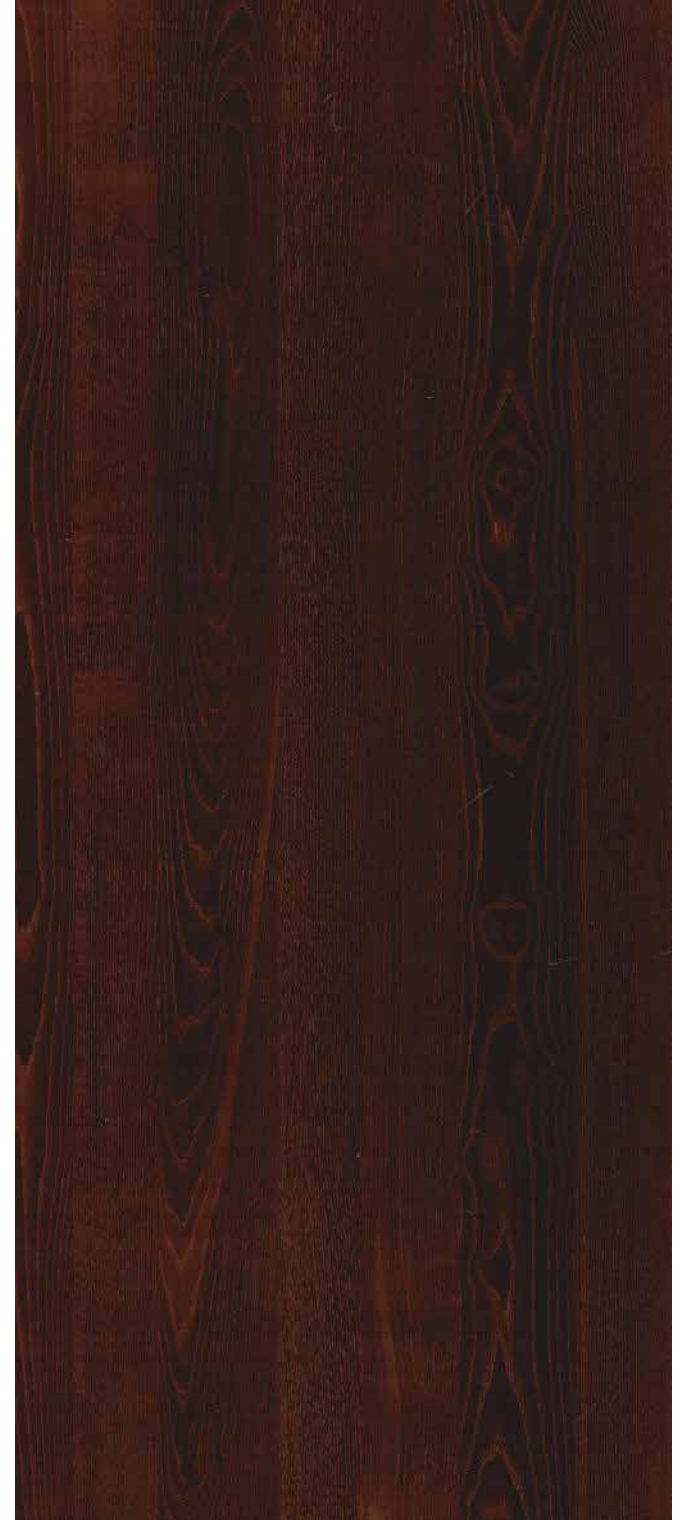
Gold Shimmer



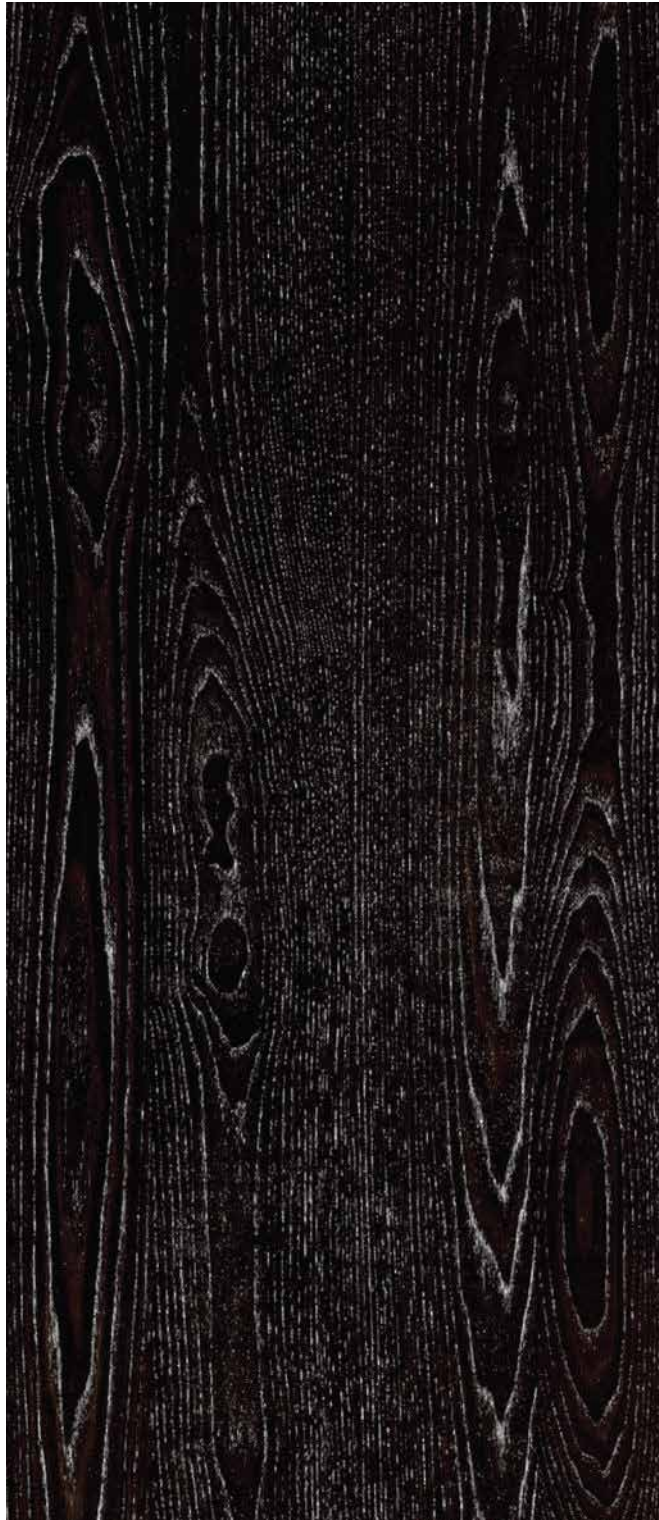
Silver Shimmer



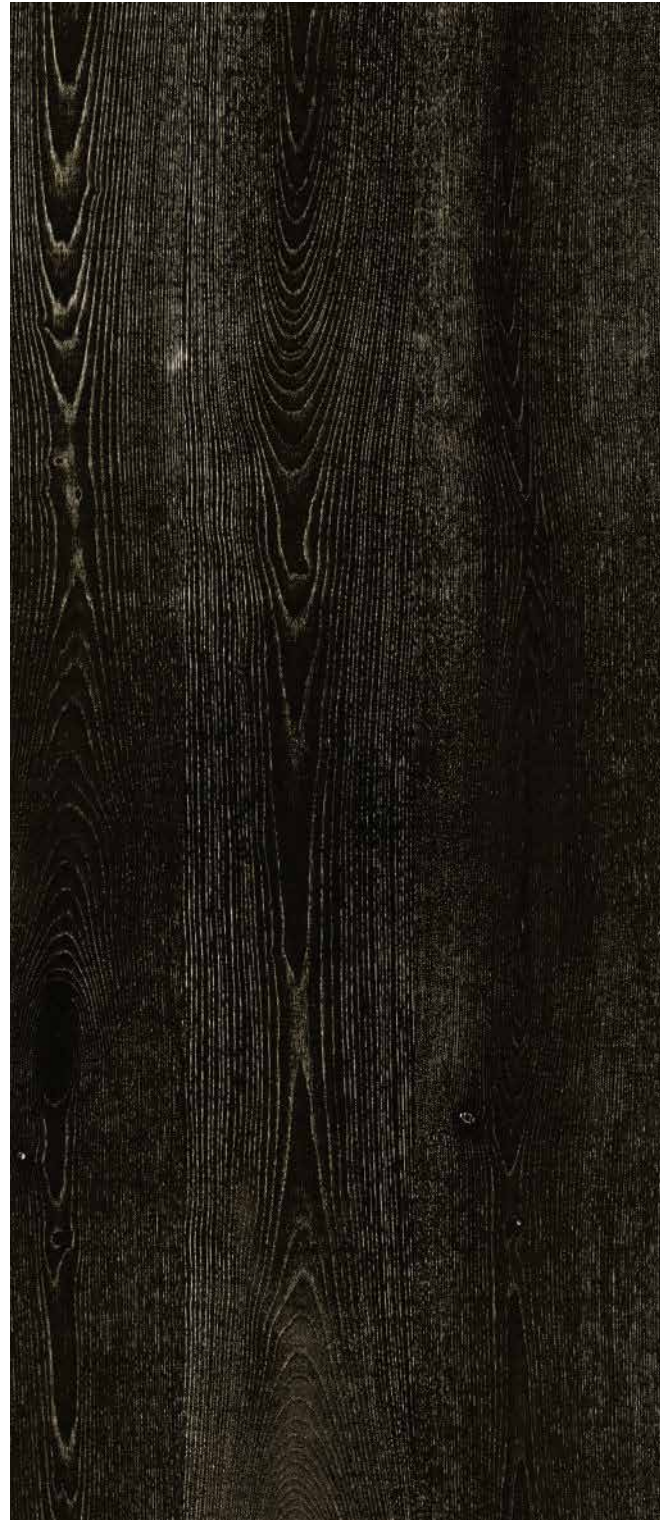
Copper Shimmer



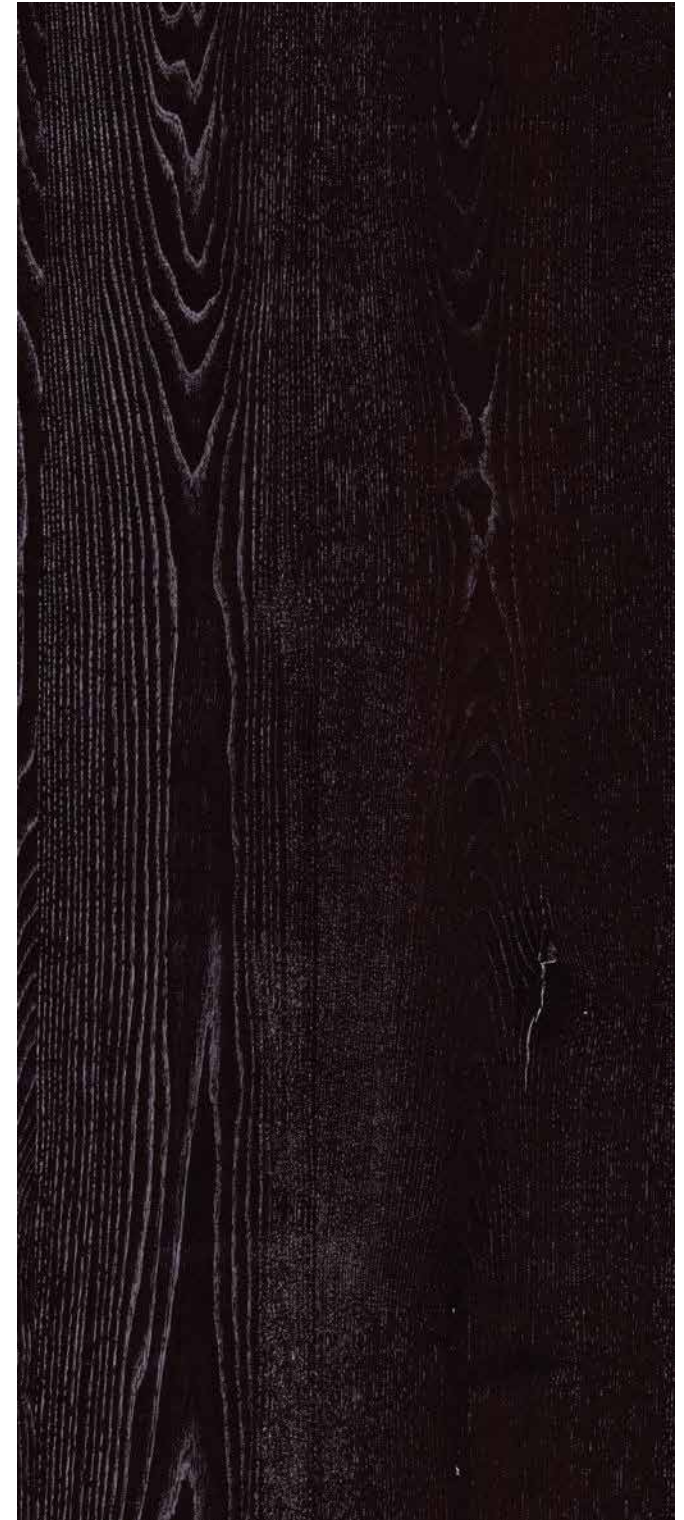
Ivory Shimmer



Sunlight Shimmer



Violet Shimmer



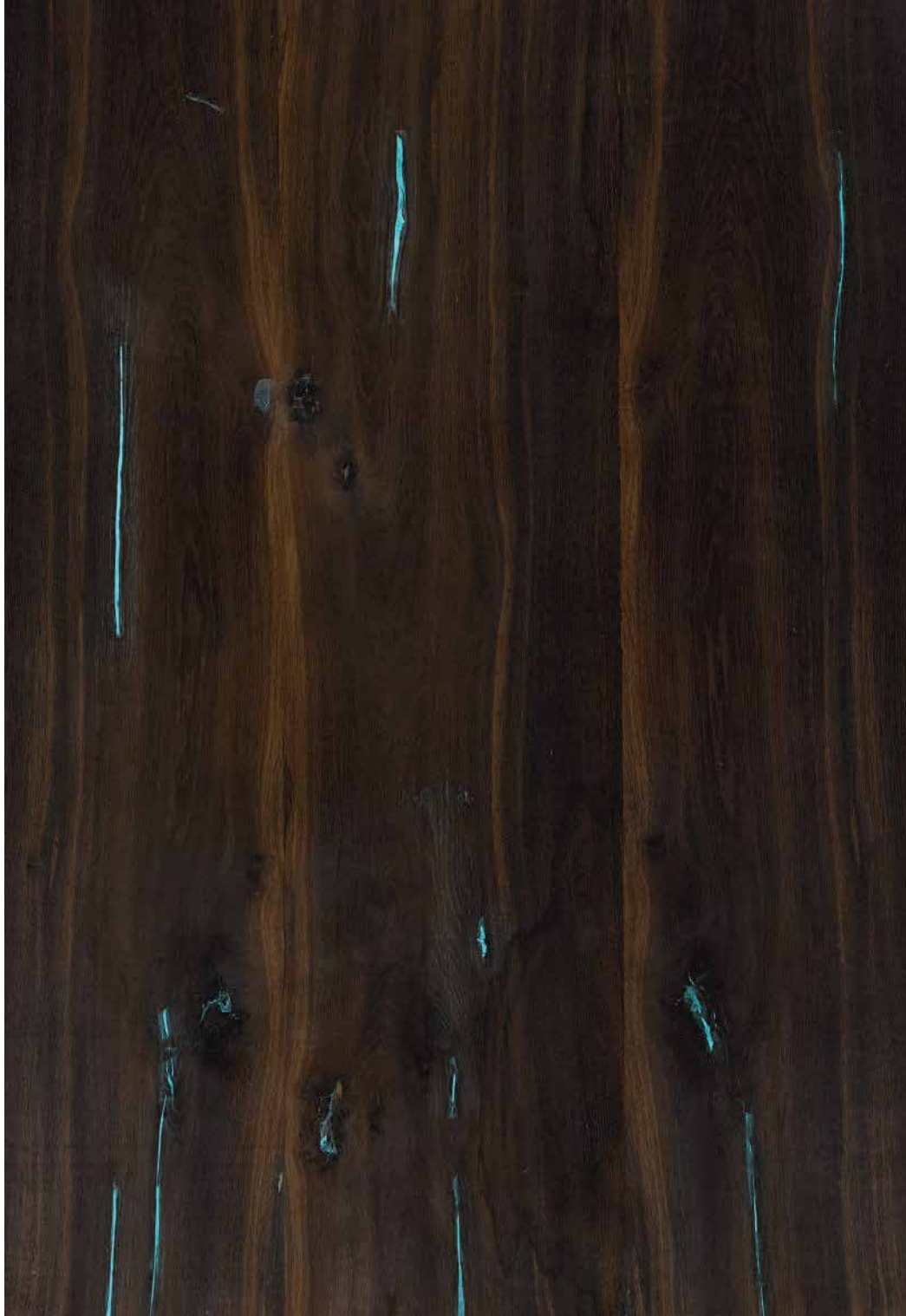
GLOW

Glow is our state-of-the-art range of natural veneers, where every room lights up in interesting ways much like the glow fish that adds glimmer to the dark waters. These designs are for those individuals who are not afraid to be unconventional.

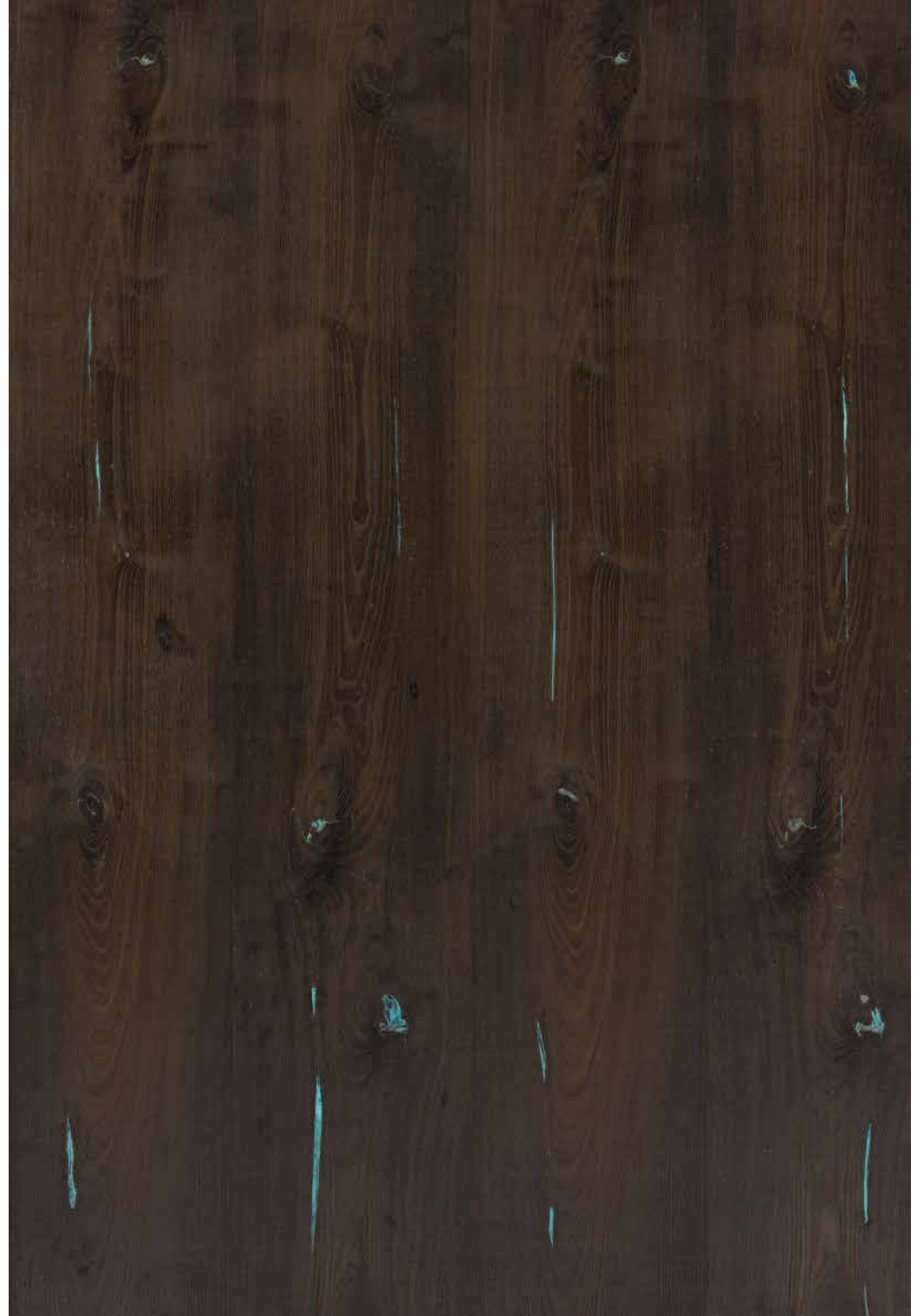




Oak Granito Glow



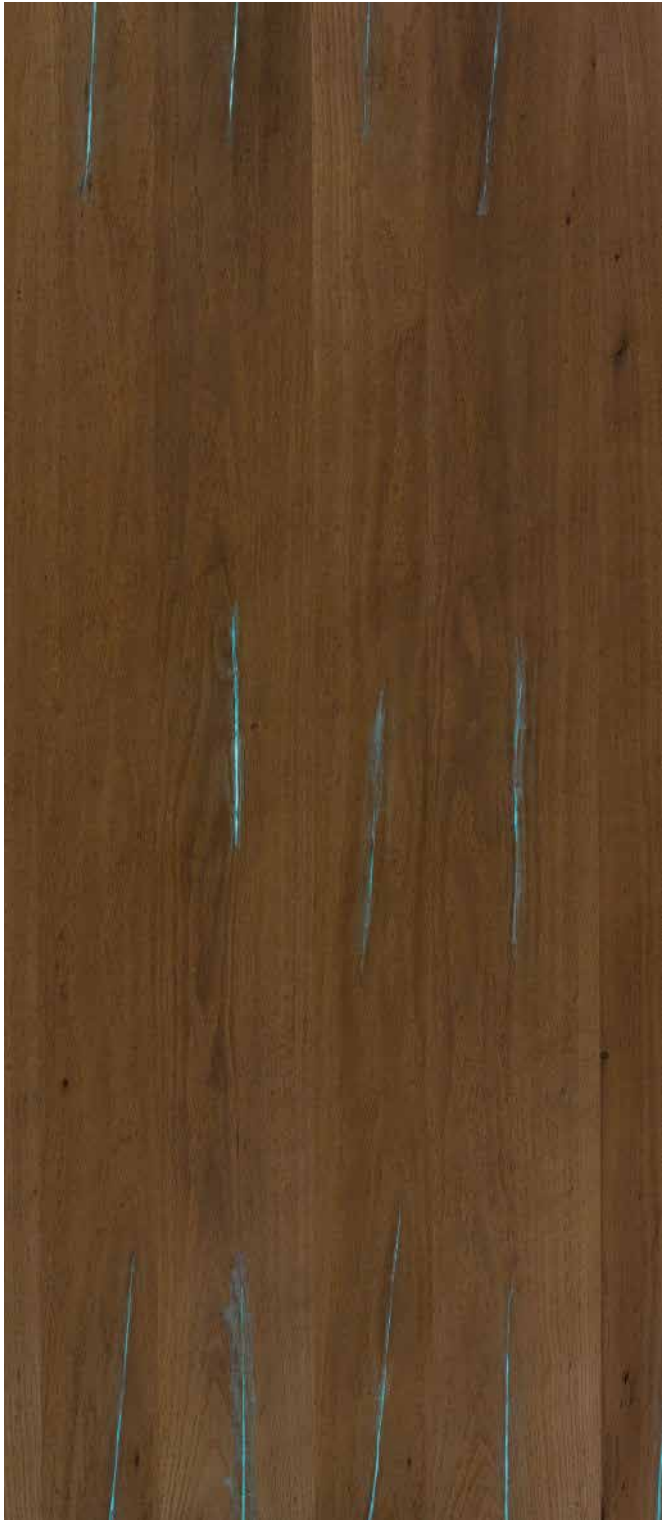
Castanea Rays Glow



American Walnut Glow



Barkburn Glow



Coco Flame Glow



CANVAS

Inspired from the vivid colour palette offered by nature, Canvas is our new collection of veneers that will add vibrancy to otherwise dull spaces.



Grey Canvas



Brown Canvas



Green Canvas



Grey Canvas



Violet Bling Canvas



ELITE

Elite is a hand-picked selection of rare and exquisite veneers meant for those who will not settle for anything ordinary. This premium collection draws its inspiration from beauty and rarity on display in nature, be it like mesmerizing emeralds or the stripes on the Royal Bengal Tiger.



Imperial Ziricote





AFRICAN EBONY

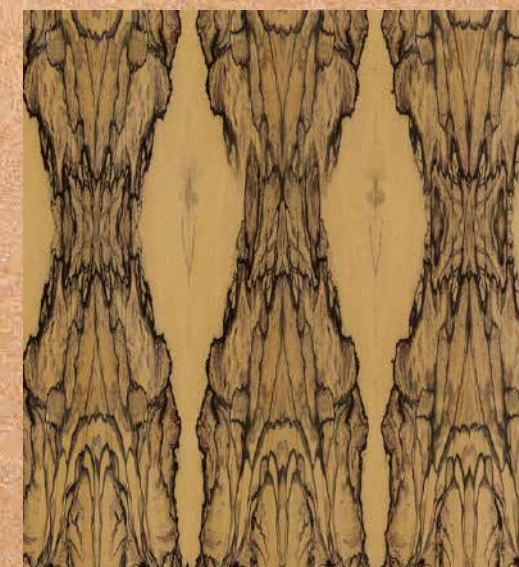
This rare species exhibits an unmatched deep and rich black color naturally. Its fine, even texture and an incredibly high natural luster makes it highly sought after veneer.





ROYAL EBONY CRÈME

This rare ebony boasts of dramatic and irregular streaks. Smooth to touch, this exotic wood exudes a matchless shine when finely polished making it an extremely tasteful choice.





IMPERIAL ZIRICOTE

This exclusive species exists only in a small portion of Central America. Famous among those with a refined taste, its varied striped patterns create intricate valleys and plateaus making it unique and perfect to embellish walls.





REAL VINTAGE OAK

This vintage veneer is obtained by reclaiming wood planks from historical structures. With traces of nail marks and original circular saw marks from the 1880's, every veneer is unique and has a story to tell.



DYED

The hallmark of Toucan bird is its bill which is large and full of eye-catching colours. Riveting and dramatic Dyed Veneers similarly add colour to an otherwise bland interior. Effortlessly complementing each other, this range of veneers adds charm to ordinary spaces.



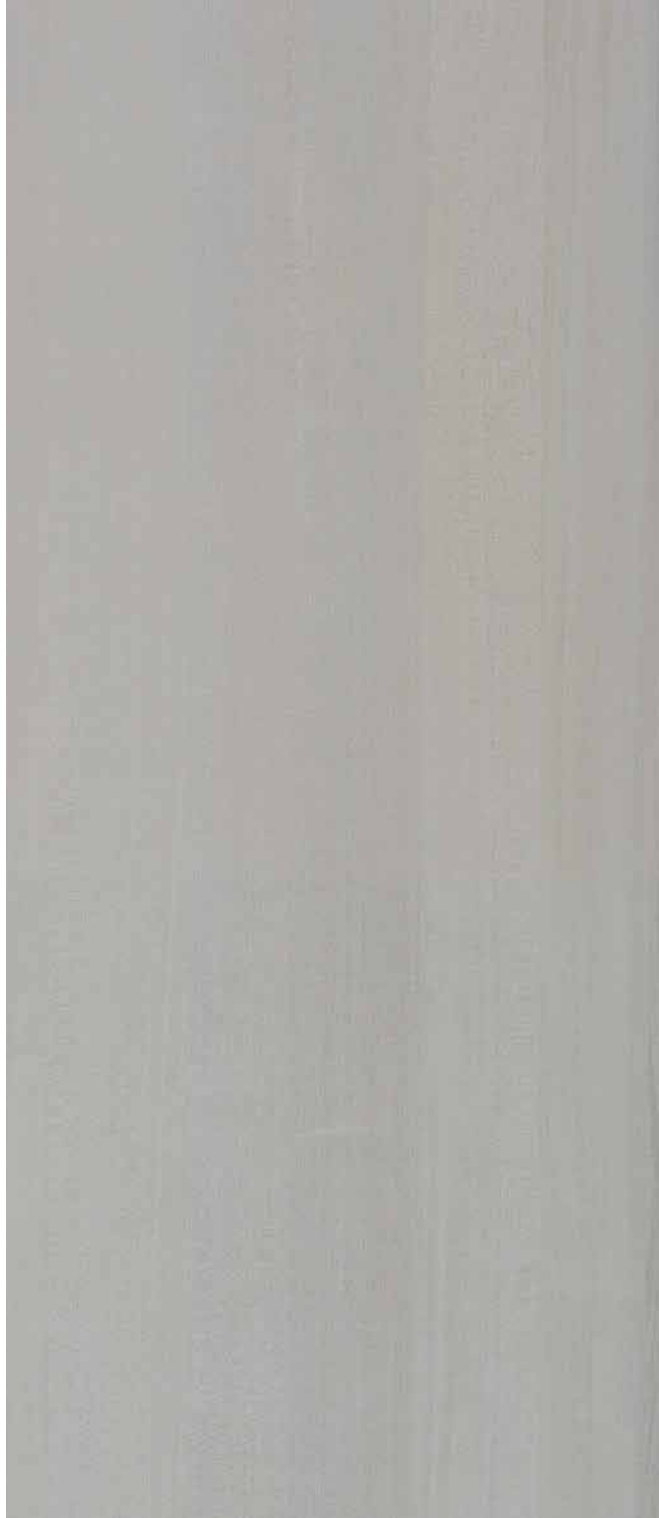


Dyed Koto Black Silk

Dyed Koto White



Dyed Koto White



Dyed Koto Marble White



Dyed White Ash White



Dyed Koto Light Grey



Dyed Koto Black Silk



Dyed White Ash Black



À LA CARTE

Each design is crafted piece by piece and hence is a masterpiece in itself. À LA CARTE offers an eclectic choice of designs for those who need exclusivity.







CHECKERED ILLUSION

Veneers are joined in a circular fashion to create checkered blocks and many such blocks are in turn arranged to create an Illusion. A perfect highlighter to the wall which showcases your treasured possessions.

Checked Illusion Mix White Oak



Checked Illusion American Walnut



BURL BLOCK

Prized for its beauty and rarity, Burls are balloon shaped growths composed of swirls of grains, laced with eyes. The tree cells divide and grow excessively and unevenly thus creating an exquisite pattern. The veneer is created by placing the cut-outs of the Burl blocks forming a delicate pattern.

Walnut Burl Block



Mapa Burl Block



Oak Burl Block



Walnut Burl Block





American Walnut Diagonal Line

DIAGONAL

Newly introduced Diagonal Veneers are created by joining veneer flitches at an angle. The diagonal lines give dramatic look to your spaces making them look large. These veneers are available in two patterns: Diagonal Line and Diagonal Bricks.

American Walnut Diagonal Line



Knotty Pine Diagonal Line



Barkburn Diagonal Line



Texas Wilderness Diagonal Line



Dark Cinnamon Diagonal Bricks



Barkburn Diagonal Bricks



Brown Santos Diagonal Bricks



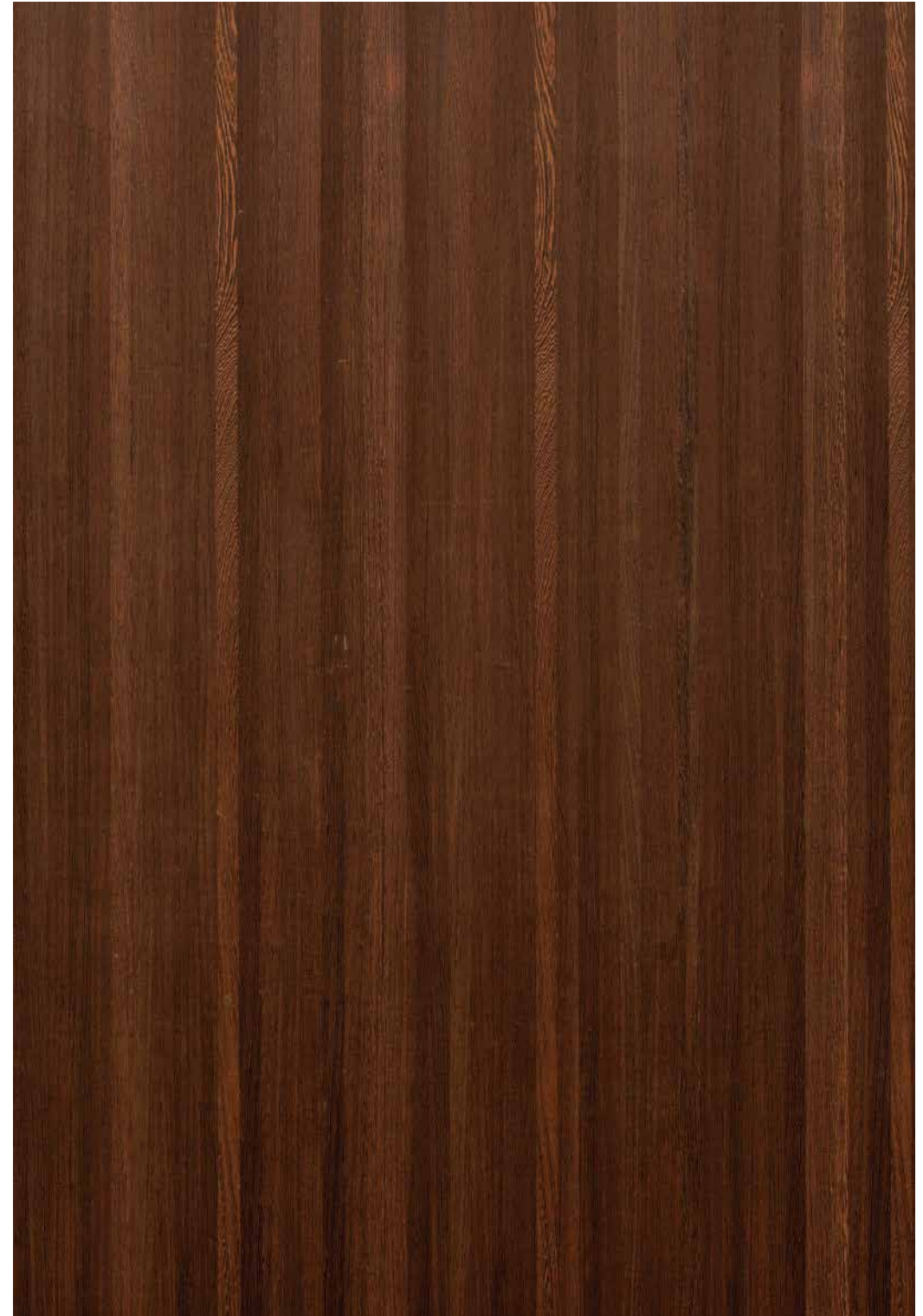
EVOLUZION

Evolution is a pattern created by randomly bringing together long, distinct strips of veneers to create a dynamic, yet refreshing design that will light up any interior space.





Wegen



Charl Border



Smoked Mok



American Lawnut



Apelis



Pie



Capylates



REVOLUZION

Revoluzion is a perfect amalgamation of veneer strips which has taken the veneer making process to the next level. The traditional and evergreen veneers are hand crafted to give horizontal and vertical designs.



Revoluzion Mellon Dew Horizontal

Revoluzion Mellon Dew Horizontal



Revoluzion American Walnut Horizontal



Revoluzion Barkburn Horizontal



BUTT CUT

Butt Cut adds a new dimension to the well accepted species. The logs of large girth are specially sourced and sliced across the annual rings found at the base of the tree. The veneer when laid out on a sheet gives an illusion of round logs stacked onto each other and forms a highly decorative circular pattern.



American Walnut Butt Cut

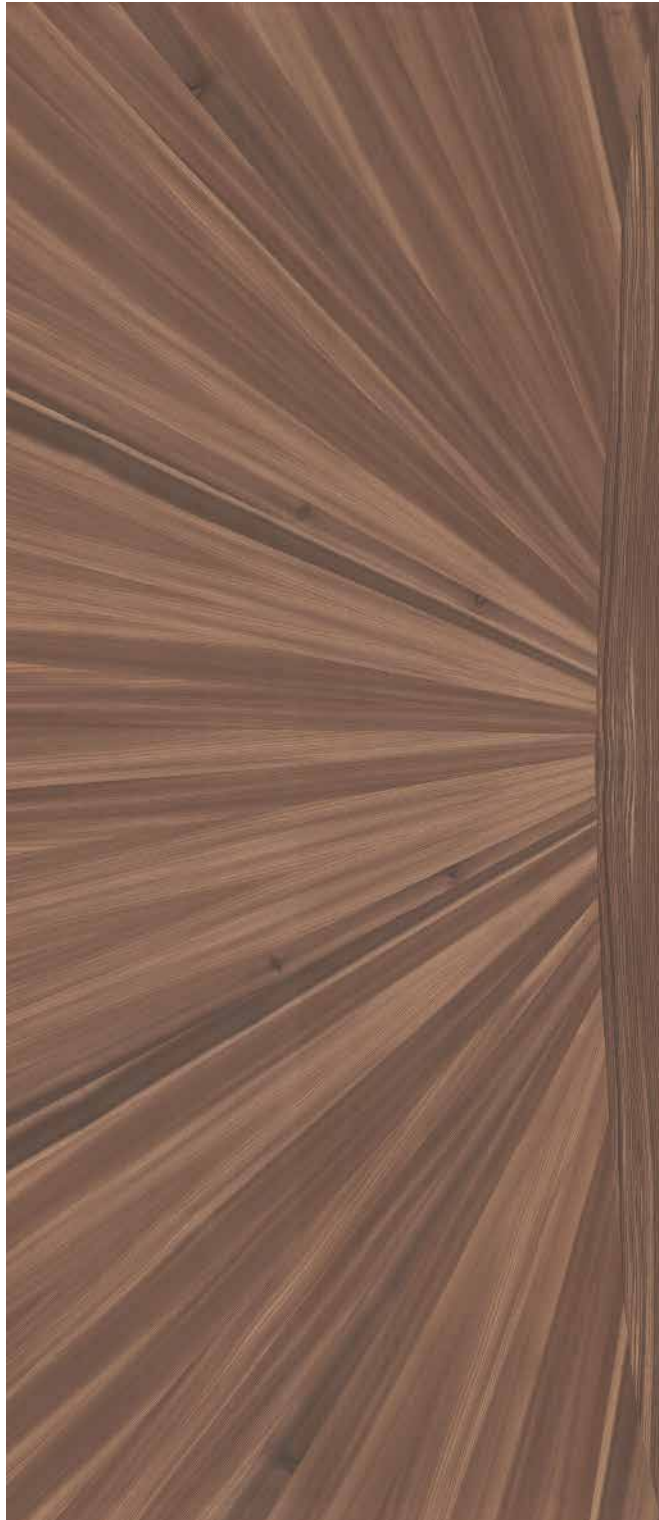


TRENDZ

A shift from the ordinary, these veneers are hand-woven piece by piece by our experts to create a range of bold and unconventional designs. Think highlighter, think unique- choose from Trendz range of veneers.



Fan Chocolure



Cross Wood



Choco Umbrella



ARIZONA

With the textured look and feel gaining popularity, we present yet another innovation in our veneer panel offerings, called Arizona Series where the surface has ridged textures giving it a 3-dimensional look and feel.



Arizona Coffee

Arizona Oleo



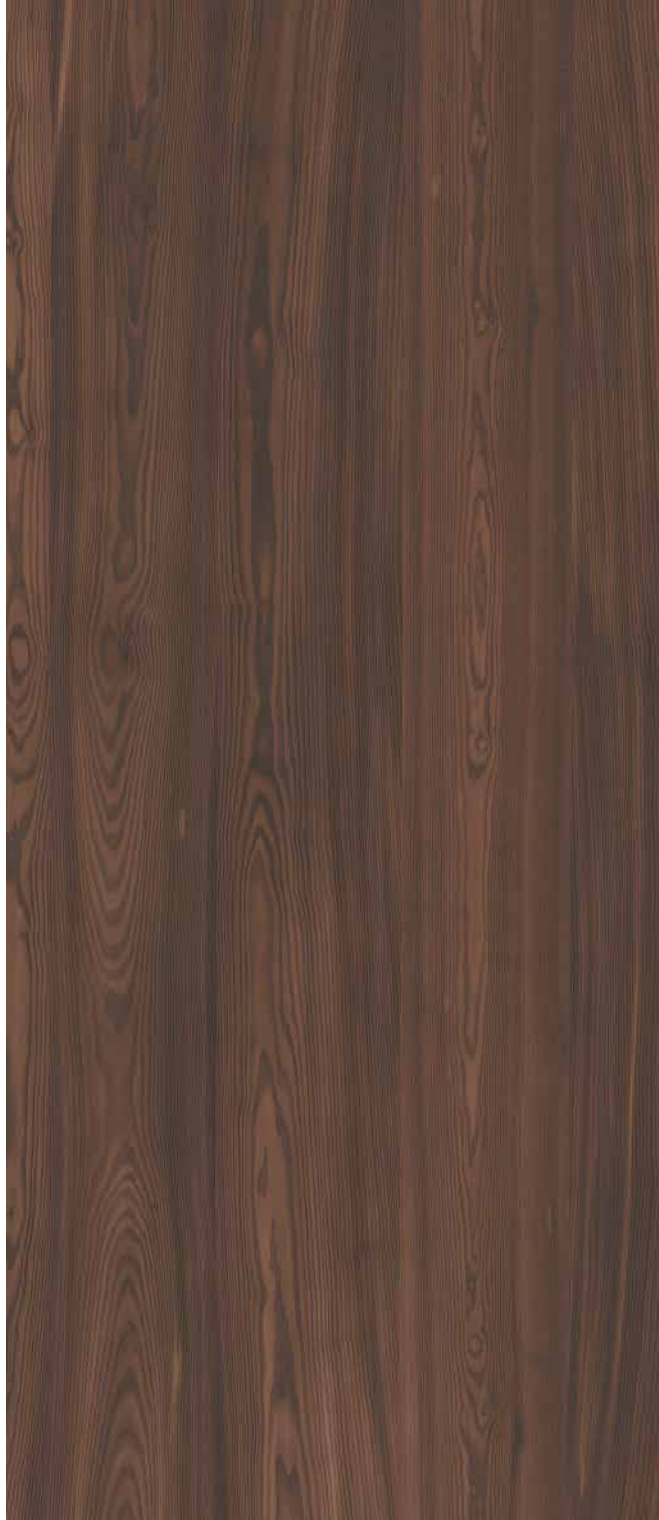
Arizona Light Brown



Arizona Coffee



Arizona Coco



Arizona Castanea Rays



Arizona Chestnut



Arizona Red Oak



Arizona White Oak



Arizona White Ash



CROTCH

Crotch is one of the unique designs of veneers offered by nature. CenturyVeneers presents a range of exclusive crotch designs featuring full curls and half-curly with random design patterns in 2 to 4 flitches which gives a royal look to the veneers and gives an uber-chic appearance to your interiors.



Teak Crotch



Mahogany Crotch



Teak Crotch

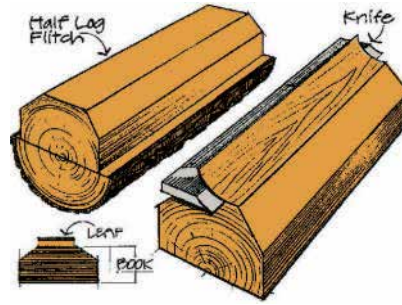


Gabon Wood Crotch



CUTTING METHODS

The types of cut determine the design pattern on the veneer. The size of the log, the wood species, the grain pattern desired and other factors determine which type of cut will be made to create the veneer. Here are some of the more common methods of cutting logs:

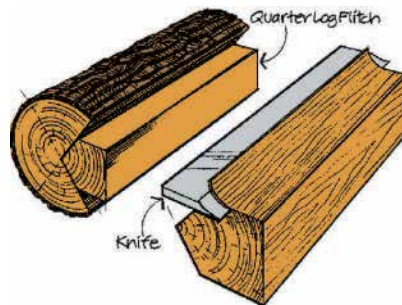


FLAT/CROWN CUT

Often referred to colloquially as a 'flowery pattern', this design is obtained by slicing the block parallel to the centre of the log. This results in a raised cathedral or flower effect by the innermost growth rings.



Flat Cut Red Oak

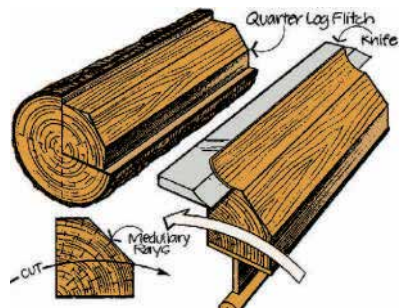


QUARTER CUT

To obtain this design, a log is first cut into four quarter blocks. Then each block is sliced perpendicular to the annual growth rings of the tree. This results in a straight grain appearance on the veneer.



Quarter Cut Red Oak

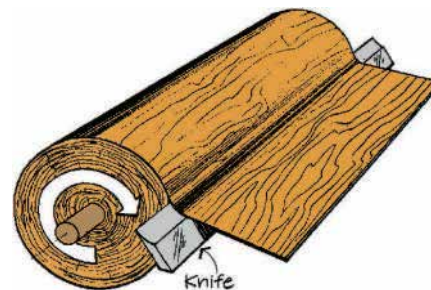


RIFT CUT

This method is generally used with Red Oak and White Oak to minimize the appearance of flakes in the final design. This is derived by slicing the block at a slight angle by cutting slightly against the modular rays. This also results in a straight line design.



Rift Cut Red Oak



ROTARY CUT

For this method of cutting, the log is centered on a lathe and turned against a broad cutting knife set into the log at a slight angle so that a continuous cut is made around the log. This results in a wild, varied design.



Rotary Cut Red Oak

GROUPING VENEERS

Veneers are grouped to resemble the grain pattern to give a uniform look and colour. A series of veneers is considered to be part of a group if their grains or appearance is similar. The size of the group depends upon the girth of the log – higher the girth, higher are the chances of a bigger group. Normally for slicing veneers, a log is divided into two to four blocks depending on the girth of the log. Each block is converted into beams. Not only do veneers produced from different beams of the same log have different grain patterns, but the grain pattern of different sections of the same beam also varies. Hence, it is broken down into groups that resemble similar design and colour.



4 Leaves Joint



6 Leaves Joint



8 Leaves Joint



10 Leaves Joint

VENEER MATCHING OPTIONS

The way you match veneer sheets can create visual rhythm and enhance your project. Here are some of the more common veneer matching approaches:

BOOK MATCH

Every other leaf of veneer is turned over like the pages of a book. The grain is mirrored in each adjacent leaf. The visual effect created is that veneer joints match, creating a symmetrical pattern.

Note: Because the tight and loose faces alternate in adjacent pieces of veneer, they may accept stains differently, resulting in a noticeable colour variation, called barber pole. These variations are not considered manufacturing defects.



SLIP MATCH

Often used with quarter sliced and rift sliced veneers, this is the process in which a sequence of matching veneer leaves or consecutive sheets of veneer are slipped out one after the next. This results in all the same face sides being exposed. The visual effect shows a grain figure repeating, but joints do not show grain match. Minimizes potential barber pole effect.



REVERSE SLIP MATCH

In reverse slip matching, the veneer leaves are slipped out from under each other and every other veneer leaf is flipped end to end. This balances the character of the veneer on the panel face.



PLEASING MATCH

Care is taken to match up the colour of each of the veneer pieces, but not necessarily the grain. Patterns result in no colour contrast at the joints.



RANDOM MATCH

Typically done only on lower grades of veneers, where knots, stains and other natural markings are allowed. Colours and grains vary, and pieces are often of different widths.



GENERAL CARE OF VENEERED SURFACES

The on-going care of finished veneered surfaces depends largely on the type and quality of coating applied. In general, veneer surfaces should not be left wet/damp or with wet staining materials on them, such as dark fruit juice/wine.

They should not be cleaned with harsh cleaners or chemicals that affect the surface finish. Sharp edges are potential problem zones for breaks or cracks in the coating.

POINTERS TO HELP YOU TAKE CARE OF YOUR VENEERS

Dusting: Use only a soft dry cloth or feather duster.

Polishing: Use a high-quality furniture polish and a soft dry cloth. It is recommended the polish used does not contain any silicone as this may cause re-coating or refurbishment problems at a later date. Abrasive polishes should be avoided.

Extreme temperature changes: The expansion or contraction of the timber due to extreme temperature changes may cause damage to the surface coating. Care should be taken in an air-conditioned or heated environment to keep the temperature fluctuations within reasonable limits. Use heat - resistant placemats under hot food and beverages to avoid heat damage.

Spillages: All spillages should be cleaned with a

damp cloth as soon as possible. Moisture may cause damage to the coating. High humidity, steam and excessive water contact with the coating may cause the coating to crack. However, if it gets under the coating, it causes white marks on the surface of the veneer. Any chemical substances and alcohol should be removed immediately if spilled on a veneered surface.

Dirty or Greasy Marks: First wipe it clean with a dry cloth, then use a lightly dampened cloth with a mixture of water and a high-quality furniture polish. Persistent dirty or greasy marks may be removed by mild, non-abrasive proprietary cleaners appropriate to the type of surface finish. The appropriateness of the cleaner should be sought from the surface coating or cleaner manufacturer. The effect of the cleaner on the surface should be tested on a hidden or a less conspicuous section on the finished veneer surface.

Direct Sunlight: Direct sunlight should be avoided on all internal veneered surfaces as fading, bleaching or colour changes of the surface coating and of the veneer may occur. Excessive sunshine may dry the veneer surface more quickly than the veneer substrate thereby causing small surface checks parallel to the grain to appear and possibly damage the surface coating.

CARE & MAINTENANCE

Polishing Process

- Stage 1 Surface cleaning
- Stage 2 Sealer application
- Stage 3 Smoothing with higher grit sanding paper*
- Stage 4 Desired polish application

Types of Polish

- Lacquer
- Melamine
- Polyurethane (PU)
- Polycoat

*Except in the veneers where specified.



Century Plyboards (India) Limited.

Regd. Office: CENTURY HOUSE,

P-15/1, Taratala Road, Kolkata - 700088.

T: +91 33 3940 3950 F: +91 33 2248 3539

Email: veneers@centuryply.com

SMS CPIL to 56070 for any queries

 CenturyPlyIndia  YouTube Centuryply1986

 decorativesbycenturyply  @decoratives_by_centuryply

www.centuryveneers.com

Please call our customer executive at **1800-5722-122**